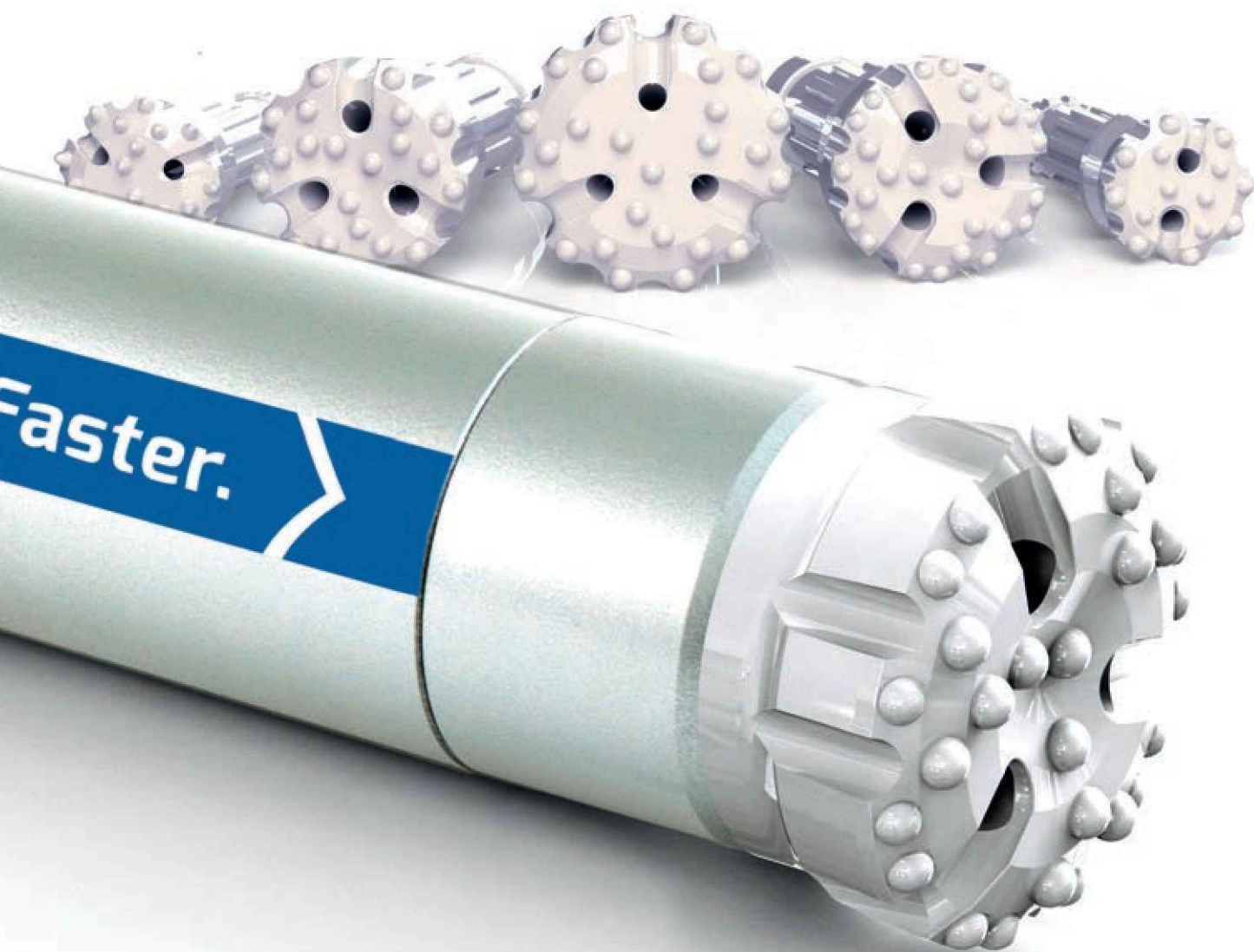


DTH BITS

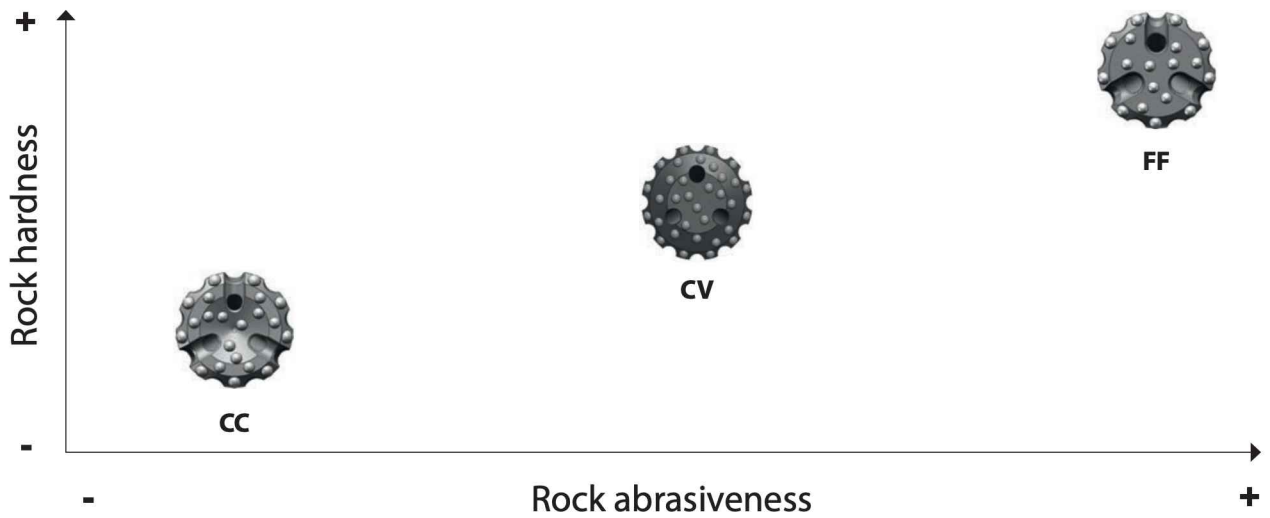
GENERAL PURPOSE BITS

DTH Bits



BIT SELECTION GUIDE

Geotechnical



DTH Bits

Conventional Bits



Flat Face - FF

- Common face design in global market
- Excellently performing bit
- Hard to very hard rock
- Solid consistent formation



Concave - CC

- Common face design in global market
- Excellent deviation control
- Medium hard to hard rock
- Broken and sloped angled formation



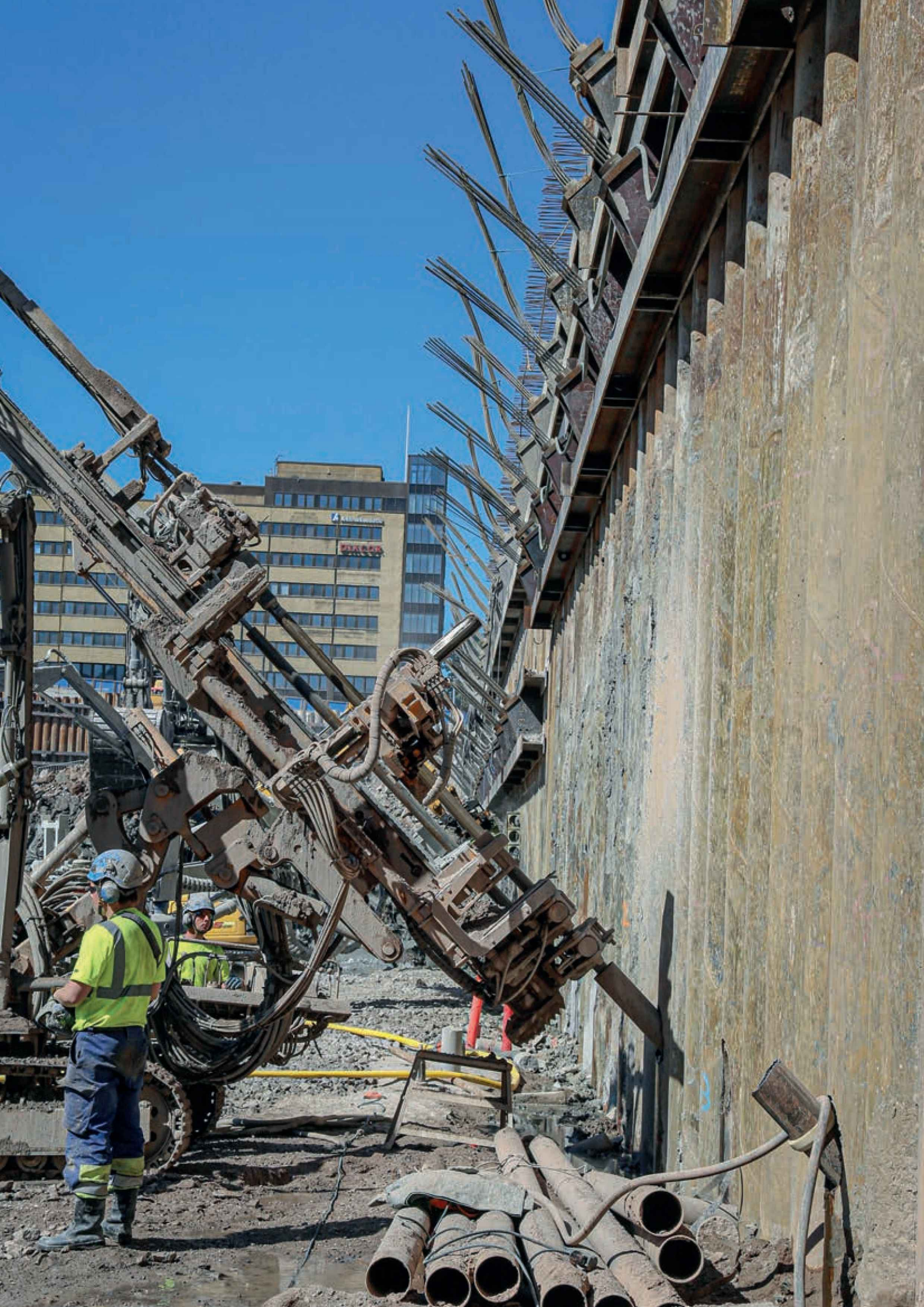
Convex - CV

- Common in global market
- Excellent penetration rate
- Medium / hard formation
- Shales / sandstone formations

New DTH Drill Bit Description

Example: DTH BIT 165 QL60 FF H1

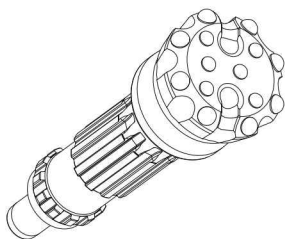
DTH BIT	165	QL60		FF		H	1
Product Group	Head Diameter	Shank Type	Footvalve	Face Type	Other	Carbide Profile	Carbide Grade
If different carbide profile or grade in gauge and face, then 1st code will represent the gauge, 2nd the face							
DTH BIT	165	DHD3.5	TL = Tubeless	FF = Flat Face	RET = Retention	H = Hemispherical	1 = Majority of Applications
DTH HAMMER		TD40	Blank = Standard Footvalve	CC = Concave	GEN2 = 2nd Generation	SB = Semi Ballistic	2 = Very Hard Ground
DTH PIPE		DHD340		CV = Convex		FB = Full Ballistic	3 = Underground Iron Ore
		QL50		DC = Drop Center		C = Conical	4 = Very High Abrasive
		DHD350		XHF = Extra Hard Formation			5 = Polycrystalline Diamond
		QL60		HFDC = Hard Formation Drop Center			
		DHD360		DRG = Double Gauge Row			
		QL80					
		DHD380					



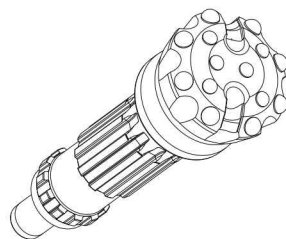
DTH BITS

STANDARD BIT SIZES

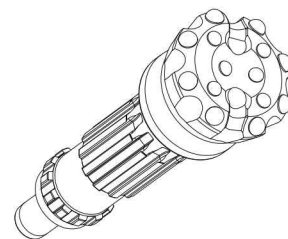
Order code	DTH Hammer	Diameter		Weight*	Face type		
		[mm]	[in]		Flat	Convex	Concave
DTH-Bit 90/3"	3"	90	3 ½	3,4		x	
DTH-Bit 95/3"	3"	95	3 ¾	3,8		x	
DTH-Bit 100/3"	3"	100	4	4,4		x	
DTH-Bit 105/4"	4"	105	4 ⅛	8,4		x	
DTH-Bit 110/4"	4"	110	4 ⅜	8,8	x	x	
DTH-Bit 115/4"	4"	115	4 ½	9	x	x	
DTH-Bit 127/4"	4"	127	5	9,9	x	x	
DTH-Bit 127/5"	5"	127	5	15,6	x	x	
DTH-Bit 140/5"	5"	140	5 ½	17,4	x	x	
DTH-Bit 152/5"	5"	152	6	18,9	x	x	
DTH-Bit 152/6"	6"	152	6	25,5	x		x
DTH-Bit 165/6"	6"	165	6 ½	26,3	x		x
DTH-Bit 200/8"	8"	200	7 ⅞	33,8			x
DTH-Bit 203/6"	6"	203	7	32,6	x		x
DTH-Bit 203/8"	8"	203	7	34,5			x
DTH-Bit 216/6"	6"	216	8 ½	34,4	x		x
DTH-Bit 216/8"	8"	216	8 ½	37,5			x
DTH-Bit 254/8"	8"	254	10	51,5			x
DTH-Bit 305/12"	12"	305	12	159			x
DTH-Bit 311/12"	12"	311	12 ¼	166			x
DTH-Bit 381/12"	12"	381	15	233			x
DTH-Bit 445/12"	12"	445	17 ½	312			x
DTH-Bit 445/14"	14"	445	17 ½	396			x
DTH-Bit 457/14"	14"	457	18	401			x
DTH-Bit 457/18"	18"	457	18	556			x
DTH-Bit 508/14"	14"	508	20	484			x
DTH-Bit 508/18"	18"	508	20	589			x
DTH-Bit 559/14"	14"	559	22	525			x
DTH-Bit 559/18"	18"	559	22	635			x
DTH-Bit 584/18"	18"	584	23	692			x
DTH-Bit 610/18"	18"	610	24	718			x
DTH-Bit 610/24"	24"	610	24	985			x
DTH-Bit 660/24"	24"	660	26	1058			x
DTH-Bit 711/24"	24"	711	28	2475			x
DTH-Bit 762/24"	24"	762	30	2622			x
DTH-Bit 813/24"	24"	813	32	3225			x
DTH-Bit 866/24"	24"	866	34	3410			x



Flat face



Convex face



Concave face

*Weight varies based on shank, face and button design.